



Feature Spotlight: Group Control

Make global changes in a network of Senix sensors

Reconfiguring a network of up to 32 Senix sensors is easily done with Group Control, one of the features in SenixVIEW software. Group Control saves the time and effort required to connect to individual sensors and make multiple changes. It allows rapid cloning of whole networks from trusted file sources. It insures there are no missed parameters when updating several sensors. And it gives communication assurance in the process.

To network Senix sensors there are only three requirements:

1. All sensors must use the RS-485 serial interface and have a similar Baud rate.
2. Every sensor must have a unique network address between 1 and 247.
3. All sensors' serial data wires must be bussed in an end-to-end node network (no circle or star arrangements). The bus should have terminal resistance across the two data lines at each end.

Senix RS-485 multi-drop and 0-10 VDC wiring using UA-TS-TB Termination Boards (Sensors Powered Individually)

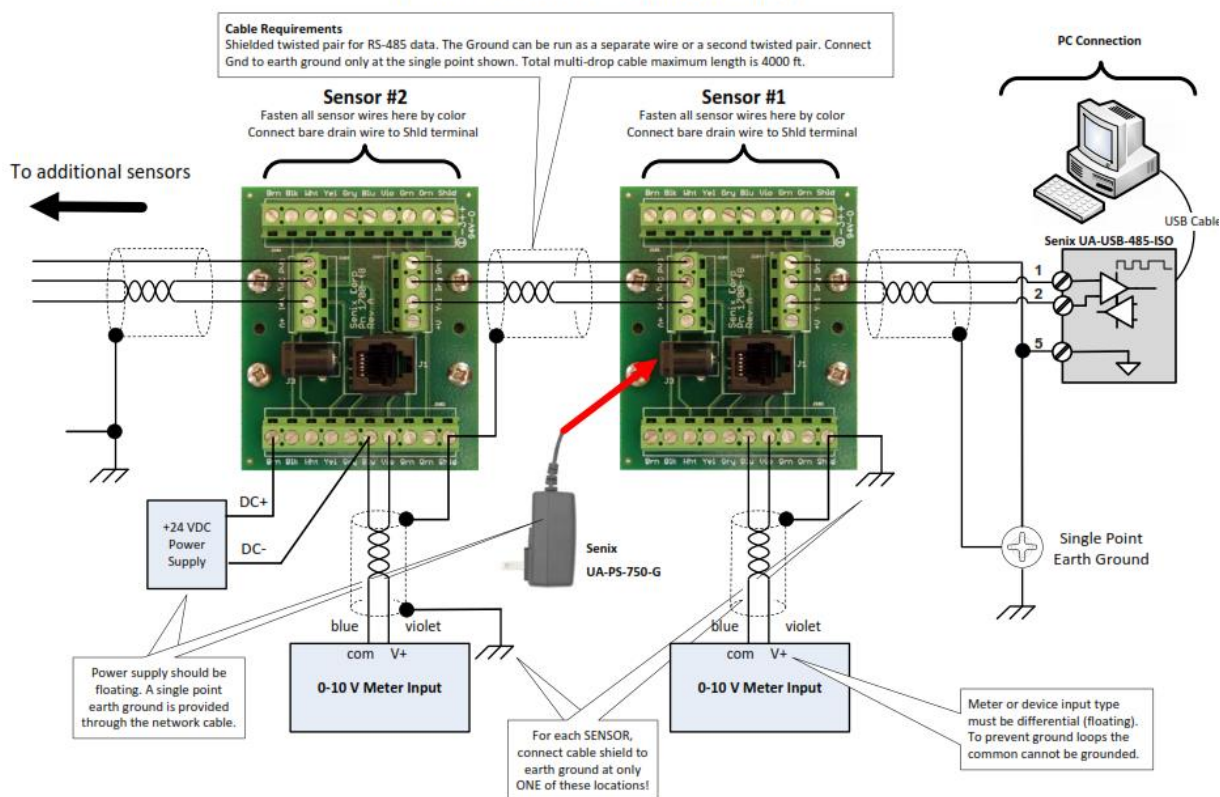


Figure 1 Typical network wiring using UA-TS-TB terminal boards.

This illustration shows two of a potential 32 sensors in a wired network using the Senix UA-TS-TB Termination board at each sensor location. With this arrangement, individual sensors could be viewed and reconfigured one at a time using SenixVIEW configuration software, or all at once using SenixVIEW's Group Control.

Note: a single DC power source can supply the network at any location. DC power is distributed to each node by the 4 wire network terminals on the boards. Ensure the single DC supply has the capacity to support the sum of all sensor current requirements on the network.

Once a sensor has been configured to the user's liking a copy of its configuration can be filed on the user's PC for reference. A network of sensors can be cloned using Group Control. The Group Control source can be one sensor or the stored file. The user can select which parts of a configuration to update across the network.

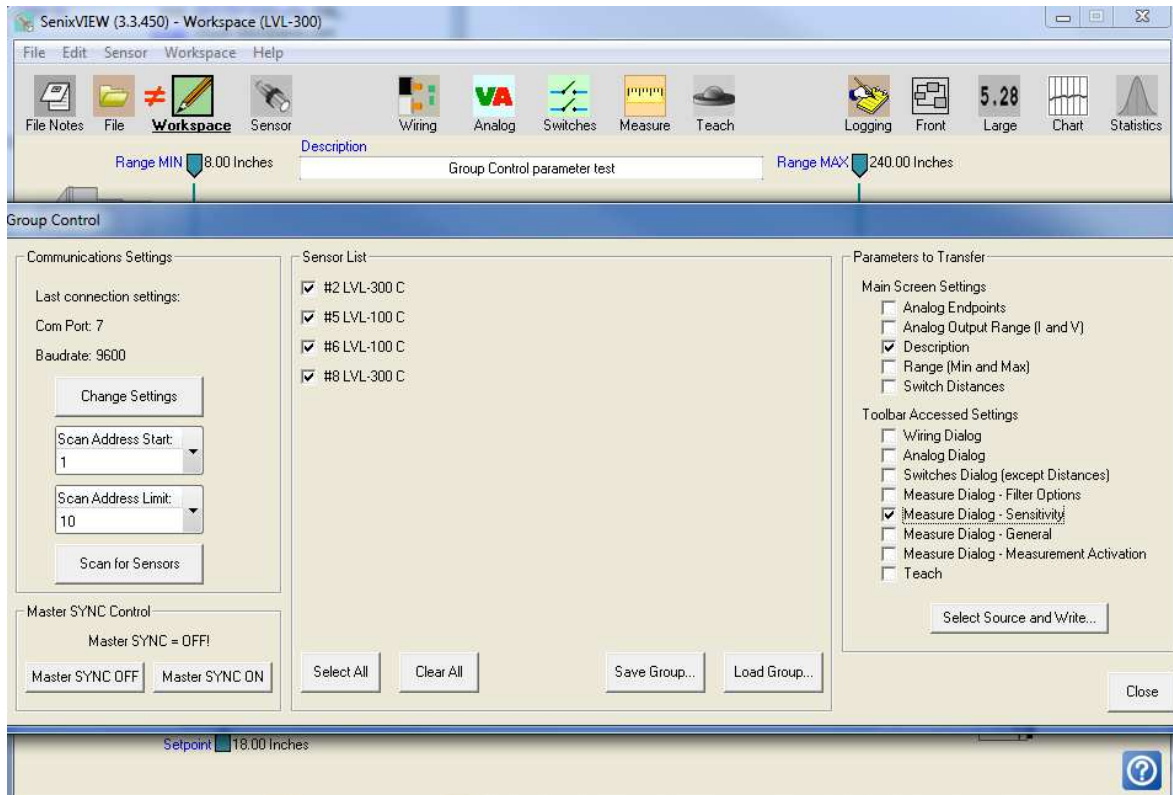


Figure 2 Group Control screen example

Specific instruction is available in the Senix User's Manual for each model. Additional help with this feature is always available from Senix Technical support at www.senix.com or by phone at Senix.